



**Modular Cooking Range Line  
thermaline 80 - 800mm Passth. Electric  
Warming Cabinet, 4 doors, GN conform,  
2 Sides(H2)-H=450**

ITEM # \_\_\_\_\_  
MODEL # \_\_\_\_\_  
NAME # \_\_\_\_\_  
SIS # \_\_\_\_\_  
AIA # \_\_\_\_\_



**588311 (MA4KCCHAO)**

Passthrough electric  
warming cabinet, with 4  
doors, two-side operated,  
GN - H2

### Short Form Specification

**Item No.** \_\_\_\_\_

800 mm wide passthrough warming cabinet with 4 doors, constructed according to DIN 18860\_2 with 70 mm recessed plinth. Internal frame for heavy duty sturdiness in 2 mm and 3 mm in 1.4301 (AISI 304). 2 mm top in 1.4301 (AISI 304). Flat surface construction, easily cleanable. THERMODUL connection system enables seamless worktop when units are connected and avoids soil penetrating. Temperature in the cabinet can be set through thermostat, up to a maximum of 110 °C. Cabinet storage space accepts GN 1/1 containers.

IPX5 water resistant certification.

Configuration: Two-side operated freestanding base, hygienic class H2.

### Main Features

- All major components may be easily accessed from the front.
- THERMODUL connection system creates a seamless work top when units are connected to each other thus avoiding soil penetrating vital components and facilitating the removal of units in case of replacement or service.
- Unit constructed according to DIN 18860\_2 with 70 mm recessed plinth.
- Temperature in the cupboard can be set through a thermostat to suit different requirements. The maximum temperature is 110°C.
- Unit can be installed below modular top appliances, designed to keep plates warm.

### Construction

- IPX5 water resistance certification.
- 2 mm top in 1.4301 (AISI 304).
- Flat surface construction with minimal hidden areas to easily clean all surfaces
- Storage space in the base of the appliance accepts GN1/1 containers.
- Internal frame for heavy duty sturdiness in stainless steel.

**APPROVAL:** \_\_\_\_\_



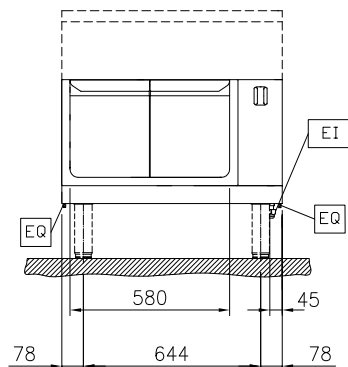
Experience the Excellence  
[www.electroluxprofessional.com](http://www.electroluxprofessional.com)  
ELUX\_EMAIL



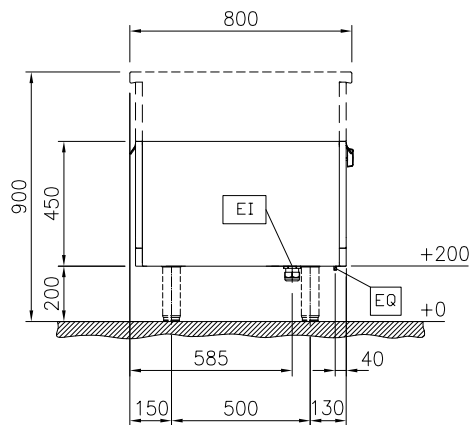
**Electrolux**  
PROFESSIONAL

Modular Cooking Range Line  
thermaline 80 - 800mm Passth. Electric  
Warming Cabinet, 4 doors, GN conform, 2  
Sides(H2)-H=450

Front

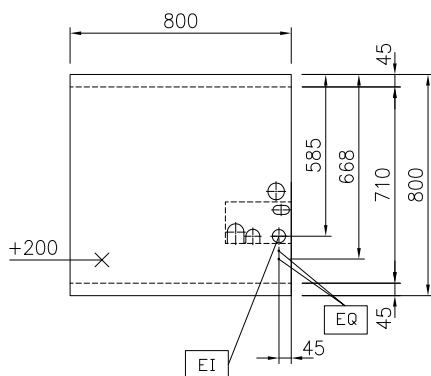


Side



EI = Electrical inlet (power)

Top



### Key Information:

External dimensions, Width:	
588311 (MA4KCCH0AO)	800 mm
External dimensions, Depth:	800 mm
External dimensions, Height:	450 mm
Cupboard Cavity Dimensions (width):	580 mm
Cupboard Cavity Dimensions (height):	330 mm
Cupboard Cavity Dimensions (depth):	710 mm
Cabinet temperature range:	30-110 °C
Net weight:	32 kg

### Sustainability

Current consumption:	5 Amps
----------------------	--------



Modular Cooking Range Line  
thermaline 80 - 800mm Passth. Electric Warming Cabinet, 4 doors, GN  
conform, 2 Sides(H2)-H=450  
The company reserves the right to make modifications to the products  
without prior notice. All information correct at time of printing.

2025.12.18



**Electrolux**  
PROFESSIONAL

Modular Cooking Range Line  
thermaline 80 - 800mm Passth. Electric  
Warming Cabinet, 4 doors, GN conform, 2  
Sides(H2)-H=450

## Optional Accessories

- Stainless steel side panel, 800x700mm, freestanding PNC 912509 ☐
- Stainless steel front kicking strip, 800mm width PNC 912634 ☐
- Stainless steel side kicking strip left and right, freestanding, 800mm width PNC 912655 ☐
- Stainless steel plinth, freestanding, 800mm width PNC 912863 ☐
- - NOT TRANSLATED - PNC 913234 ☐
- - NOT TRANSLATED - PNC 913244 ☐
- - NOT TRANSLATED - PNC 913258 ☐
- - NOT TRANSLATED - PNC 913281 ☐
- - NOT TRANSLATED - PNC 913668 ☐
- - NOT TRANSLATED - PNC 913684 ☐



Modular Cooking Range Line  
thermaline 80 - 800mm Passth. Electric Warming Cabinet, 4 doors, GN  
conform, 2 Sides(H2)-H=450  
The company reserves the right to make modifications to the products  
without prior notice. All information correct at time of printing.

2025.12.18